

# Project Portfolio



INNER CITY  
ENVIRONMENTAL

## Introduction

Inner City Environmental are based in Kent and provide a wider range of commercial and domestic environmental services to the Construction and Property Industries.

- Asbestos Management Survey
- Asbestos Removal & Encapsulation
- Lead Paint Removal
- Soft Strip Demolition
- Environmental Cleaning
- Land Remediation
- Licensed Scaffolding
- Demolition



## Health & Safety

Our high staff retention rates reflect our commitment to our people, our recognition of the importance of maintaining and preserving their competence so they are able to do their jobs to the best of their abilities and deliver a first class service which all our clients deserve.

On starting work with Inner City Environmental every member of staff completes a comprehensive induction. This process enables our HR department to complete a skills analysis with their line manager and ensure staff competence while producing the individual's Personal Development plan at the same time. This plan initially identifies what skills our people have and the ones both they and their manager feel will help them better carry out their work more effectively. This plan continues to develop throughout the employee's time with the company and includes training requests and career aspirations and so on.

Our commitment of not compromising on the quality we deliver for our clients, along with our robust management of health and safety issues on site places us amongst the select few contractors fully licensed with directly employed skilled accredited staff. We have never received an enforcement or improvement notice and have never had a project stopped.

We maintain a Health & Safety Document Management System in line with HSE requirements which is fully supported by our Senior Management team and Health & Safety staff who are fully qualified to undertake site inspections and report on health and safety issues.

## Environmental

As a company, we have recognised our responsibilities for environmental practices regarding our operations and the service offered to our clients.

The following are incorporated into our working procedures:

- Ensuring our customers and suppliers are working to their own environmental and legislative responsibilities
- Only using specific waste disposal facilities where control and environmental compliance is proven to be of the highest level.
- Investment in vehicles and equipment conform to the latest environmental guidelines.
- Continual environmental training to all our workforce

## Equality & Diversity

UK legislation sets minimum standards for companies to support successful workplace diversity and equality is covering age, disability, race, religion, gender and sexual orientation, among others.

Inner City firmly believes in this by giving value to all workers by benefiting and embracing their differences. We go beyond the government standards and aim higher when building a fully inclusive environment that contributes to our employee's well being and success.

## Supporting Charities

We look beyond our service delivery as a benefit to a community and the wider world, we believe in the importance of peace of mind, happiness, well-being, inclusion, equality, employment and a cleaner greener environment for ALL, and as such we choose to support the following good causes :

- COVID-19 NHS SUPPORT -Delivery of PP3 Masks to Hospitals across Essex
- COVID -19 NHS SUPPORT - Delivery of Latex Gloves / other PPE to local hospitals
- Recycling 110Kg of paper - Saving 10 trees and 1104Kg of CO2 (2019) & 6 trees and 690 CO2 (2020)
- Renewal of Fleet of Euro5 and Euro 6 Vans
- Sponsorship of a local children's football team
- Supporting local Foodbanks
- Supporting local scout groups
- Sponsorship & support for Demelza Children's Hospice





## Chalgrove Aerodrome

**Category: Prestigious**

**Scope of works:** We are proud to have been appointed the preferred Asbestos Removal partner for the worlds leading aircraft ejection seat manufacturer Martin Barker. Chalgrove Airfield is a former World War II aerodrome near Chalgrove, South Oxfordshire. While the Airfield will play an important role in meeting the future needs of South Oxfordshire, it is important to recognize the heritage of the site and its continued use as an aerodrome facility.

Development plans reflect this history and include provision for an active runway and for the existing uses to be retained onsite. The site is a live aircraft hanger which is fully occupied with staff. Our scope of works involved the to cutting of 2no. 6" holes at high level through the internal asbestos paper (chrysotile) lined strawboard to the RHS wall of the hanger to install fire rated sleeves to facilitate the installation of new extraction units within the new work shop which is under construction.

Access to the hanger was through the main hanger doors. No isolations were required for works to safely proceed. Air monitoring was carried out continuously, and we continued to deliver our operations systematically and safely in line with COVID-19 directives.



**Fujitsu**

**Category: Commercial**



**Scope of works:** We are proud to have been appointed as the Asbestos Removal specialist for this global end user, carrying out our works in a safe and secure manner whilst working in a fully occupied building. Our scope of work includes the full removal, encapsulation and decontamination of this 10 floor West London commercial premises.

Commencing in 2016, we continue to deliver our operations systematically and safely throughout this occupied building, phased removal and decontamination is ongoing with additional works continuing throughout 2021 and in line with COVID-19 directives.

Removal Encapsulation - to carry out the removal of sprayed insulation and residue to the ceiling and beams under fully controlled conditions, asbestos contains Amosite & Chrysotile and is in a poor unsealed condition. Removal of contaminated ceilings within the 8th floor to allow the repair of a water leak the condition of the asbestos is poor & the main type is amosite.





## Aspen House

### Category: Residential



**DOWNWELL GROUP**  
*Enabling Solutions*

**BOUYGUES  
CONSTRUCTION**

**SCOPE OF WORKS:** We are proud to have been appointed as the Asbestos Removal specialist for this 7 storey residential block and associated buildings, demolition project in the heart of London's Camden district. Inner City Environmental were appointed for Asbestos Management Services by Downwell Demolition enabling Camden continue with their programme to build 112 replacement homes on the Maitland Park Villas site.

Our scope of works included the removal of AIB wall panels, ceiling panels, and debris across various buildings and site. All works have been carried out systematically and safely in line with industry best practice and the latest COVID-19 directives.

Phase 1 : Works to the gym - Commenced 06/10/2020 Completed 08/10/2020 - This was to remove non-asbestos timber flooring and carry out a full environmental clean of the void beneath it.

Phase 2 : Works to the main block consisting of various enclosures within communal areas and flats. Commenced 31/03/2020 & successfully completed works on 13/10/2020.





# Mulalley and Co Limited (on behalf of Croydon Council)

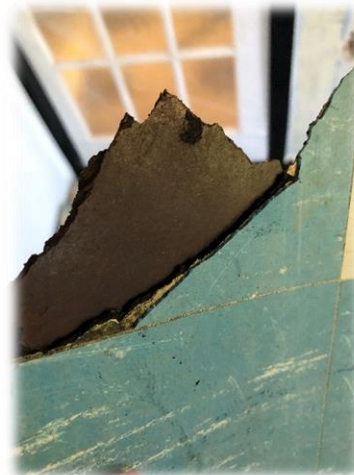
## Category: Housing Association



**SCOPE OF WORKS:** We were appointed as the contractor to carry out the removal of asbestos from void and occupied properties in line with the investment programme agreed between Croydon Council and Mulalley. These works were carried out in April 2021 and required two enclosures to safely manage the removal of the AIB.

The void property was located in a mid-terrace row of houses within a cul-de-sac area that created the potential for congestion. Together with the work instruction, survey report and site visit, our Contracts Manager produced the detailed Plan of Works to comply with the Control of Asbestos Regulations 2012, L143 Approved Code of Practice and CDM Regulations 2015.

The asbestos containing materials were located in bedrooms one and two of the property. As this was a void property the hazards of residential property and removing personal possessions was eliminated. Our Contracts Manager verified with the Mulalley Site Agent that no other trades or contractors would be given access to the property for the same dates that we had planned to carry out the asbestos removal works.





## Peel Estate

### Category: Demolition

**SCOPE OF WORKS:** We proudly undertook the asbestos removal works at Peel Estate NW5. The works consist of the removal of asbestos insulation board externally to the side of the building. Type of asbestos present within the material was Amosite & Chrysotile.

This was our 3<sup>rd</sup> phase at Peel Estate since starting works there in 2018.

We removed AIB behind tiles to the outside of the building from a fixed scaffolding with a HAKI staircase under fully controlled condition

Scaffolding provided by Inner City Scaffolding.

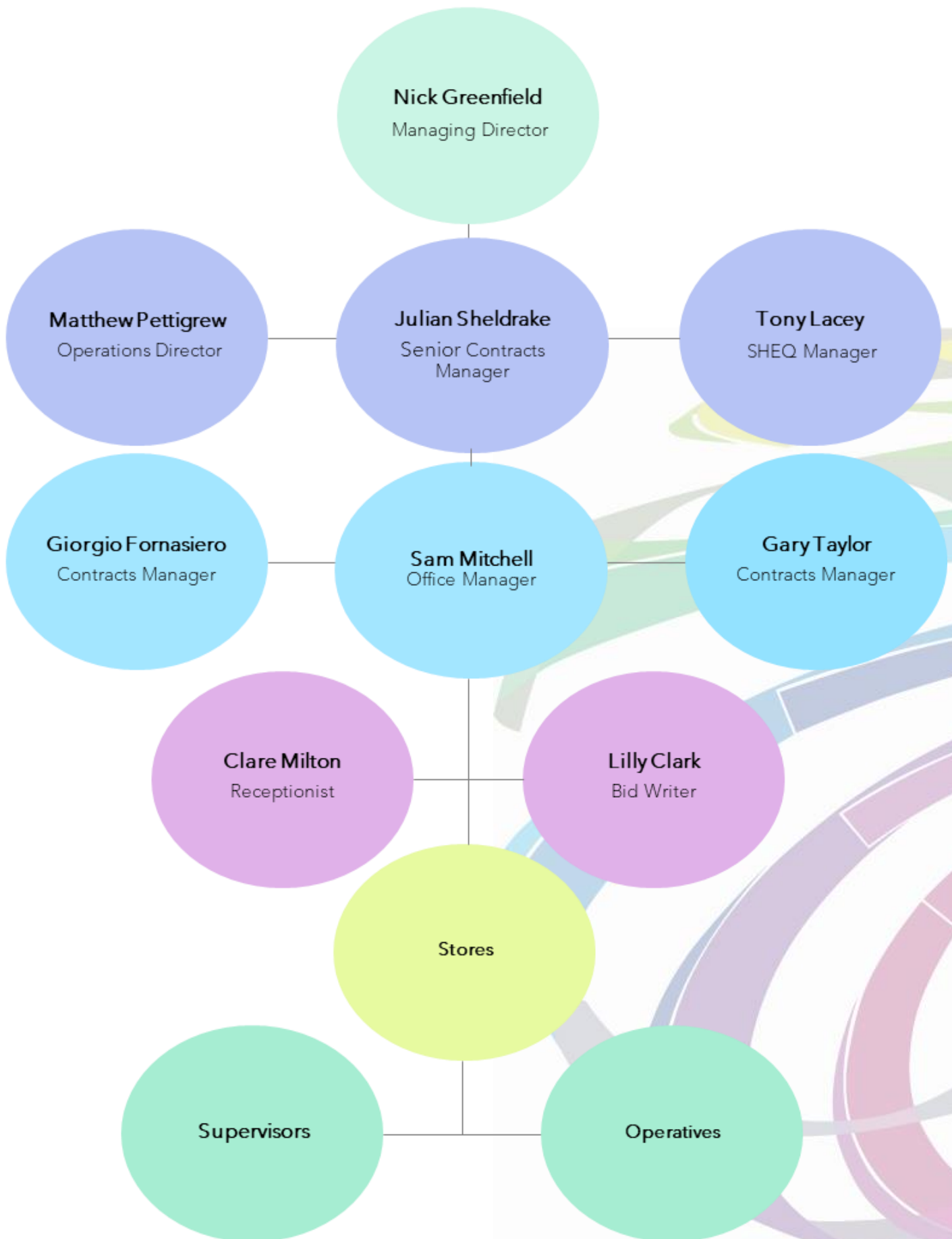


**DOWNWELL GROUP**  
*Enabling Solutions*





# INNER CITY ENVIRONMENTAL







Inner City Environmental  
Unit 5, Schooner Park,  
Schooner Court,  
Crossways Business Park,  
Dartford  
DA2 6NW

[www.innercityenvironmental.co.uk](http://www.innercityenvironmental.co.uk)